



## Heavy Duty Cable Management Solutions

Expert Solutions to Create  
Improved Designs and  
Lower Total Installed Cost

**PANDUIT**<sup>®</sup>

infrastructure for a connected world

## Panduit is your wire management solutions partner for the harshest, heavy-duty applications

Panduit provides expertise, services and products for:

- Optimized wire management design
- New product development
- Problem solving and process improvement

Ideally suited for applications, including:

- Heavy Truck
- Construction Equipment
- Agricultural Equipment
- Bus
- Specialty Trucks, such as Dump Trucks, Concrete Trucks, Utility Trucks

Draw on our expertise to help you reduce wire management costs and hassle!

## Expertise to engineer profitability

Engineers face cable management decisions impacting the performance, quality and migration plans of their vehicle platforms. Panduit is equipped to help. Let our expertise and robust heavy duty cable management products help you lower total installed costs.



### **Consultative Engineering**

For the many design decisions and application issues encountered, help is needed to identify the cable management products best suited for each application. Panduit provides consultative engineering assistance and best practice sharing to engineers working on Truck, Bus and Heavy Equipment applications.



### **Innovative New Products**

Panduit has expanded our offering of robust heavy duty cable management products to cover even more applications for OEM Truck, Bus and Heavy Equipment manufacturers. Always innovating, Panduit continues to design and launch new products for these demanding applications.



### **Tooling Support**

In addition to a broad range of application specific heavy duty cable management products, Panduit also offers installation tooling and tooling services to meet the highest OEM specifications

## Heavy Duty Cable Management Solutions

Whether you design systems for agricultural machinery or heavy-duty construction equipment, your electrical connections are continuously subjected to extreme conditions and harsh environments. They can break down quickly - unless each and every component can withstand the rigors of your challenging operating environment. Panduit can help you avoid downtime, costly rework or even equipment recalls. We offer the widest range of products specifically designed for your toughest challenges, from severe temperatures and vibration to extreme mechanical stress.

Our R&D capabilities offer world-class products that are designed to meet or exceed industry standards. Look to Panduit engineered solutions to solve your manufacturing problems, application needs, and new product development to reveal new opportunities for operational efficiencies and cost-savings. Partner with Panduit and keep your systems operating dependably. We're wired for the way you work.

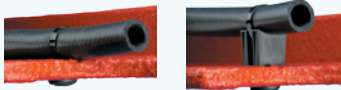
### Pan-Ty® Cable Ties

Page 6-7



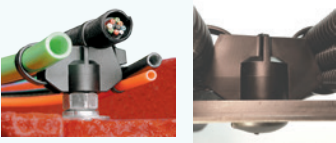
### Chassis Mount Ties and Spacers

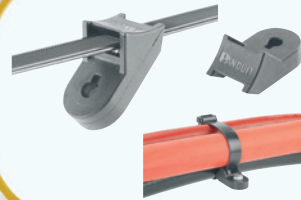
Page 8



### Stud Mounts

Page 9

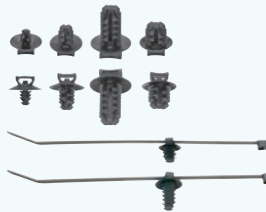




**Tie Mounts**  
Pages 10



**Swivel Mounts, Cable  
Spacer, Clamps**  
Page 11



**Fir Tree Mounts**  
Page 12



**Cable Tie Tools**  
Page 13



**Complete Your Bundle**  
Page 14-15

## NEW! Heavy Duty Double Clamp Cable Ties

### Pan-Ty® Double Clamp Cable Ties

The Pan-Ty® Double Clamp cable ties provide a cost effective way secure and separate parallel hoses, tubing, wires and wiring bundles in an easy to install one-piece design. The Double Clamp cable tie has a strong 150 lbs. loop tensile strength to

provide secure support for even high load applications. This new cable tie is ideal for heavy duty applications such as Truck and Heavy Equipment.

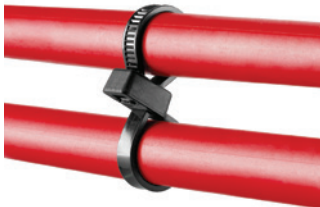


Part Number	Max. Bundle Dia.		Length		Width		Thickness		Min. Loop Tensile		Recommended Installation Tool	Std. Pkg. Qty.	Std. Ctn. Qty.
	in.	mm.	in.	mm.	in.	mm.	in.	mm.	lb.	N			
PLDC1.5EH-C350	1.3	33	13.1	332.7	0.5	12.73	0.057	1.5	150	667.2	GS4EH-E, PPTEH	100	500
PLDC2.5EH-C350	2.3	58.4	19.28	489	0.5	12.73	0.057	1.5	150	667.2	GS4EH-E, PPTEH	100	500

### Double Loop Cable Ties

#### Applications

- Underhood hose and harness routing
- Areas where bundles must be secured parallel to each other or another element



#### Solution

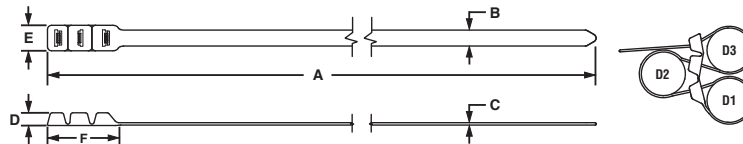
Looking for a labor saving alternative to butterflyed cushioned clamps when securing hoses and wire bundles? Panduit's Multiple Loop Cable Ties are the perfect solution

#### Features

- Offers multiple loop capability
- Prevents bundle damage with a strap body that spreads the clamping forces
- Provides high tensile strength to route bundles securely
- Installs easily by hand - uses PANDUIT® tooling for repeatable tension and cutoff
- Reduces part number inventory with a single product to cover multiple bundle sizes

Part Number	Max. Combined Bundle Dia. D1 + D2		Length		Width		Thickness		Min. Loop Tensile Str.		Recommended Installation Tool	Std. Pkg. Qty.	Std. Ctn. Qty.
	In.	mm	In.	mm	In.	mm	In.	mm	Lbs.	N			
<b>Light-Heavy Cross Section</b>													
PLB4H-TL	3.60	91	14.7	373	0.300	7.6	0.075	1.9	120	534	GTH-E, GS4H-E, GS4EH-E, PTH, STH2, ST3EH	250	2500
<b>Weather Resistant Nylon 6.6 - Light-Heavy Cross Section</b>													
PLB4H-TL0	3.60	91	14.7	373	0.300	7.6	0.075	1.9	120	534	GTH-E, GS4H-E, GS4EH-E, PTH, STH2, ST3EH	250	2500

### Triple Loop Cable Ties



Part Number	Max. Combined Bundle Dia. D1 + D2 + D3		Length		Width		Thickness		Min. Loop Tensile Str.		Recommended Installation Tool	Std. Pkg. Qty.	Std. Ctn. Qty.
	In.	mm	In.	mm	In.	mm	In.	mm	Lbs.	N			
<b>Extra-Heavy Cross Section</b>													
PL3B5EH-C0	5.00	127	20.0	508	0.500	12.7	0.075	1.9	125	556	GS4EH-E, ST3EH	100	1000

## **NEW!** Heavy Duty Wide Strap Cable Ties

### Pan-Ty® Wide Strap Extra Heavy Cable Ties

The Pan-Ty® Wide Strap Extra Heavy cable ties provide an easy to install way to secure hoses, tubing, wires and wiring bundles. These cable ties feature a wide, thin body that is more flexible and easier to install than the typical Heavy and Extra-Heavy Cross section ties. The Wide Strap Extra Heavy cable tie has a strong 120 lbs. loop tensile strength to provide secure support for even high load applications. This new cable tie is ideal for heavy duty applications such as Truck and Heavy Equipment.



#### Key Features and Benefits

**Flexible Strap Body:** Flexible cable tie body provides easier insertion and installation than other heavy and extra heavy cross section cable ties.

**Minimizing Pinching:** The wide .5" design of the cable tie body minimizes pinching on hoses and tubing compared with typical cable ties.

**Versatile Material:** New Nylon 6/6 material is Heat stabilized (115° C), UV weather resistant and impact modified.

Part Number	Max. Bundle Dia.		Length		Width		Thickness		Min. Loop Tensile		Recommended Installation Tool	Std. Pkg. Qty.	Std. Ctn. Qty.
	In.	mm	In.	mm	In.	mm	In.	mm	Lbs.	N			
PLWS2EH-TL350	2.25	57.15	9.1	231.10	0.5	12.7	0.055	1.4	120	533.8	GS4EH-E PPTEH	250	2,500
PLWS3EH-TL350	3.25	82.55	12.1	307.34	0.5	12.7			120	533.8	GS4EH-E PPTEH	250	2,500
PLWS4EH-TL350	4.125	104.775	15.1	383.54	0.5	12.7			120	533.8	GS4EH-E PPTEH	250	2,500

### Pan-Ty® Cable Tie PLT4H - Flexible Heavy Cross Section

Provides excellent tensile strength that is expected with a Heavy Cross Section design. These cable ties install quickly and more easily than the typical Heavy Cross section ties. This innovative design allows no-slip gripping of the tip along with the ability to cinch with one hand. Installation with Panduit GTH-E or GS4H-E cable tie hand tools provides faster installation, exact bundle tension and smooth tie cut off. This flexible heavy cross section is ideal for heavy duty applications such as Truck, Bus, and Heavy Equipment.



#### Key Features and Benefits

**Flexible Strap Body:** Allows installation of the cable with one hand.

**Improved Tip Design:** No-slip gripping of tail on initial insertion.

**Flexible Locking Design:** Provides a low thread force for quick and easy installation to improve productivity and worker safety.

**Lower Tool Tension Settings Required:** Easier, faster installation with lower installer effort to install ties to proper tension settings.

**Material Options:** Available in both weather resistant (-0) and heat stabilized (-30) materials for application versatility.

Part Number	Length		Width		Thickness		Max. Bundle Dia.		Min. Loop Tensile Str.		Material	Std. Pkg. Qty.	Std. Ctn. Qty.
	In.	mm	In.	mm	In.	mm	In.	mm	Lbs.	N			
PLT4H-TL0/147	14.5	368	0.300	7.6	0.060	1.5	4.11	104.5	120	534	Weather resistant nylon 6.6	250	2500
PLT4H-TL30/147	14.5	368	0.060	7.6	0.060	1.5	4.11	104.5	120	534	Heat stabilized nylon 6.6	250	2500

## Chassis Mount Ties and Spacer

### Applications

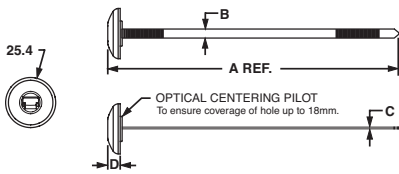
- Run cable and hose along the frame rails
- Secure a bundle under a chassis assembly
- Manage wire harnesses in the cab and sleeper
- Use a through-hole in frame/chassis to mount

### Solution

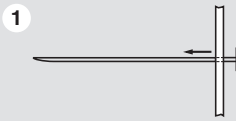
Panduit **Sta-Strap®** Classic Mount Ties are uniquely designed to secure a bundle directly to a chassis or panel utilizing a through hole

### Features

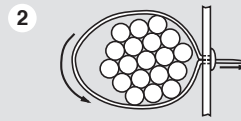
- Eliminates the need for separate fasteners to reduce costs and decrease installation time
- Remains adjustable and releasable until tie is tensioned and cut-off
- Installs easily with Panduit hand-operated tools.
- Engages clearance hole with optional centering pilot (2 designs) to prevent tie from shifting or abrading during vehicle operation



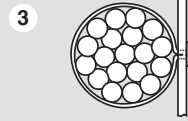
### Three Easy Steps



1 Insert tip end of STA-STRAP cable tie through the correct size pre-drilled hole in the panel or chassis.



2 Wrap cable tie around the bundle and insert the tip end back through the hole and head of the cable tie.



3 Pull tip and until STA-STRAP cable tie is snug on bundle. Tension and cut off excess portion with Panduit cable tie installation tool.

Part Number	Length		Width		Thickness		Hole Diameter Range		Max. Bundle Dia.		Min. Loop Tensile Str.		Recommended Installation Tool	Std. Pkg. Qty.	Std. Ctn. Qty.
	In.	mm	In.	mm	In.	mm	In.	mm	In.	mm	Lbs.	N			
<b>Without Centering Pilot</b>															
SSPM2.5H-L300	10.1	257	0.300	7.6	0.062	1.6	0.316 – 0.820	8.0 – 21.0	2.76	70	120	534	GTH-E, GS4H-E, GS4EH-E, PTH, STH2, ST3EH	50	2500
SSPM4H-L300	14.8	376	0.300	7.6	0.062	1.6	0.316 – 0.820	8.0 – 21.0	4.00	102	120	534	GTH-E, GS4H-E, GS4EH-E, PTH, STH2, ST3EH	50	2500
<b>With Centering Pilot</b>															
SSPM2.5HP-L300	10.1	257	0.300	7.6	0.062	1.6	0.440 – 0.820	11.2 – 21.0	2.76	70	120	534	GTH-E, GS4H-E, GS4EH-E, PTH, STH2, ST3EH	50	2500
SSPM4HP-L300	14.8	376	0.300	7.6	0.062	1.6	0.440 – 0.820	11.2 – 21.0	4.00	102	120	534	GTH-E, GS4H-E, GS4EH-E, PTH, STH2, ST3EH	50	2500
<b>With Long Centering Pilot</b>															
SSPM4HLP-TL300	14.8	376	0.300	7.6	0.062	1.6	0.440 – 0.820	11.2 – 21.0	4.00	102	120	534	GTH-E, GS4H-E, GS4EH-E, PTH, STH2, ST3EH	250	2500

### Applications

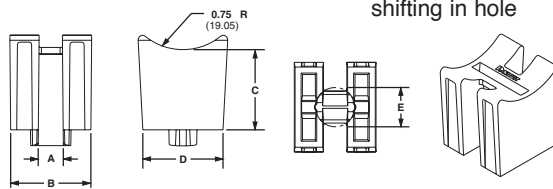
- Maintain a standoff from the frame rail in Chassis Tie applications

### Solution

Panduit Spacer Mounts are used along with Panduit Chassis Mount Ties in applications where bundles must be secured away from the frame to avoid abrasion.

### Features

- Uses clearance hole in frame
- Provides a standoff of 1" (25mm)
- Reduces cable and hose abrasion during vehicle operation
- Provides a secure mounting surface with curved bundle cradle
- Installs easily after cable tie has been threaded through hole and around bundle
- Includes centering pilot to prevent assembly from abrading or shifting in hole



Part Number (mm)	Cable Tie Channel (A) in. (mm)	Width (B) in. (mm)	Standoff Height (C) in. (mm)	Base Depth (D) in. (mm)	Recommended Panel Hole Diam. (E) in. (mm)	Std. Pkg. Qty.	Std. Ctn. Qty.
TMSH50-T300	0.310 (7.875)	1.00 (25.4)	1.00 (25.4)	1.00 (25.4)	.50 (12.7)	100	1000



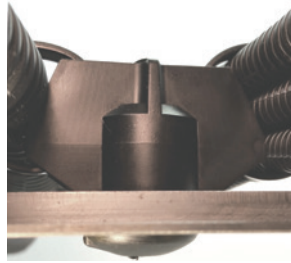
## Stud Mounts

### Applications

- Run cable and hose along the frame rails
- Secure a bundle under a chassis assembly
- Manage wire harnesses in the cab, sleeper and trailer
- Use exposed threads from fasteners already in the vehicle
- Maintain a standoff from the frame to avoid bundle abrasion

### Solution

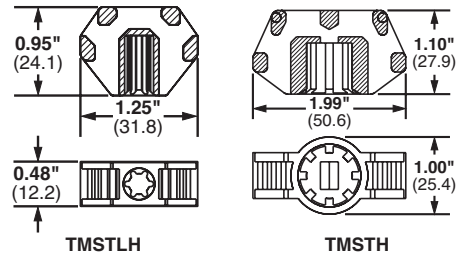
Panduit Cable Tie Stud Mounts are designed to utilize threaded fasteners already present in the vehicle. These easy-to-use wiring accessories can be easily applied with a light hammer blow, by threading them onto the fastener, or by using Panduit's specialized application tool. Use these mounts with a variety of Panduit cable ties.



Fasten Stud Mounts to the frame using Panduit chassis ties

### Features

- Installs onto fasteners such as bolts, Huck® fasteners and welded studs
- Fits a wide variety of common stud sizes and cable ties
- Offers multiple position configurations for flexibility in application
- Installs faster than metal clamps with threaded fasteners
- Stands up to tough application environments with a weather-resistant nylon 6.6 material
- Provides a standoff from the frame rail to help prevent bundle abrasion during vehicle operation
- Stands up under vibration
- Secures bundle with Panduit cable ties – up to 4 discrete bundles per mount
- Remains in vehicle during service or repair – reattach bundle with new cable ties



Part Number	Used with Cable Ties*	Color	Environment	Mounting Method	Std Pkg. Qty	Std Ctn. Qty
TMSTLHS6-M0	M, I, S, HS, LH	Black	Outdoors	1/4" stud dia. (6mm)	1000	5000
TMSTLHS8-M0	M, I, S, HS, LH			5/16" stud dia. (8mm)	1000	5000
TMSTHS10-D0	M, I, S, HS, LH, H			3/8" stud dia. (10mm)	500	—
TMSTHS11-D0	M, I, S, HS, LH, H			7/16" stud dia. (11mm)	500	—
TMSTHS12-D0	M, I, S, HS, LH, H			12mm stud dia.	500	—
TMSTHS13-D0	M, I, S, HS, LH, H			1/2" stud dia. (13mm)	500	—
TMSTHS16-D0	M, I, S, HS, LH, H			5/8" stud dia. (16mm)	500	—
TMSTHS19-D0	M, I, S, HS, LH, H			3/4" stud dia. (19mm)	500	—

\*Cable tie cross section sizes: M = Miniature, I = Intermediate, S = Standard, HS = Heavy-Standard, LH = Light-Heavy, H = Heavy

## **NEW!** Heavy Duty Mounts and Assemblies with Wide Strap Cable Ties

### Extra Heavy Tie Mounts

Panduit offers many accessories for mounting the Pan-Ty Wide Strap Extra Heavy cable ties, including: extra-heavy screw applied cable tie mounts (TMEH2). In addition to these

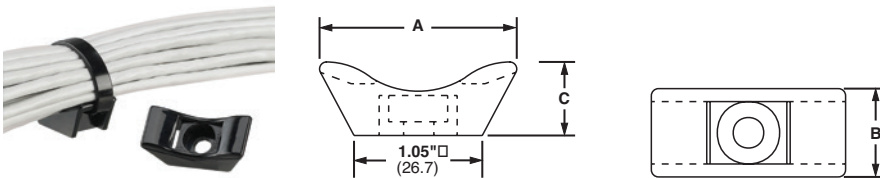
accessories, the Pan-Ty Wide Strap Extra Heavy cable ties are also available pre-assembled with mounting accessories: Extra Heavy Mounts.



Part Number	Used with Cable Ties‡	Material	Color	Environment	Mounting Method	Std Pkg. Qty	Std Ctn. Qty
TMEH2S5-D350	M, I, S, HS, LH, H, EH	Impact modified heat stabilized weather resistant nylon 6.6	Black	Outdoors or Indoors	#10 (M5) ScREW	500	2,000
TMEH2S6-D350					1/4 (M6) Screw	500	2,000
TMEH2S8-D350					5/16 (M8) Screw	500	2,000
TMEH2S5-3E-C350	PLWS3EH-TL350 Wide Strap Cable Tie pre-installed				#10 (M5) ScREW	100	1,000
TMEH2S6-3E-C350					1/4 (M6) Screw	100	1,000
TMEH2S8-3E-C350					5/16 (M8) Screw	100	1,000

### Screw Applied Tie Mounts

- Unique cradle design provides maximum stability for cable bundle
- Route and support large diameter and heavy cable bundles.



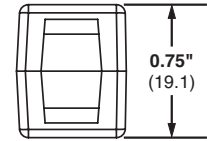
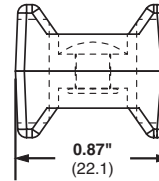
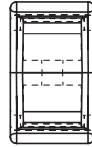
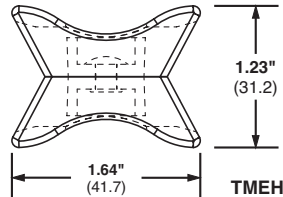
Part Number	Used with Cable Ties‡	Material	Color	Environment	Mounting Method	Std Pkg. Qty	Std Ctn. Qty
TMEH-S8-Q0	M, I, S, HS, LH, H, EH	Weather Resistant Nylon 6.6	Black	Outdoors	#8 (M4) Screw	25	250
TMEH-S10-Q0					#10 (M5) Screw	25	250
TMEH-S25-Q0					1/4 (M6) Screw	25	250
TMEH-S10-C100		Weather Resistant Polypropylene			#10 (M5) Screw	100	500
TMEH-S10-C109		Polypropylene			Green	Indoors	#10 (M5) ScREW

‡Cable tie cross section sizes: M = Miniature, I = Intermediate, S = Standard, HS = Heavy-Standard, LH = Light-Heavy, H = Heavy, EH = Extra-Heavy

## Swivel Mounts

- The two mounts are securely fastened together with a connecting rivet that allows both mounts to rotate
- Can join bundles of cable, tubing, or hoses that may need to

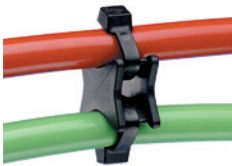
- move or are not parallel
- Separates bundles to avoid abrasion
- Material: Weather Resistant Nylon 6.6



Part Number	Used with Cable Ties†	Pull Apart Force		Color	Environment	Std. Pkg. Qty.	Std. Ctn. Qty.
		Lbs.	g				
TM3-X2-C0Y	M, I, S, HS, LH	120	54,431	Black	Indoors/Outdoors	100	1000
TMEH-X2-L0Y	M, I, S, HS, LH, H, EH	250	113,398			50	500

## Cable Spacer

Panduit® Cable Spacers are designed to accommodate hoses or cable bundles while maintaining separation. The spacers work with Panduit® Cable Ties up to heavy crosssection.

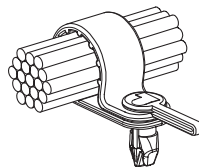
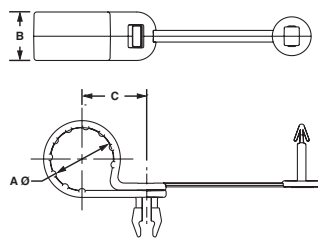


Part Number	Color	Dimensions				Environ.	Max. Continuous Use Temp.	CE Compliant	RoHS Compliant	Min. Order Qty.	
		Height mm	Length		Width						
CSEH15A30-C0	Black	0.38	39.9 mm	1.57 in.	20 mm	0.79 in.	Indoor	-40°F (-40°C) – 185°F (85°C)	No	Yes	100

## Pan-Clamp™ Heavy Duty Fixed Diameter Clamps

- One-piece design significantly reduces installation time
- Integrated ribs prevent rotation of cable bundles and ensures secure grip on hoses

- Material: Impact modified Weather Resistant Nylon 6.6

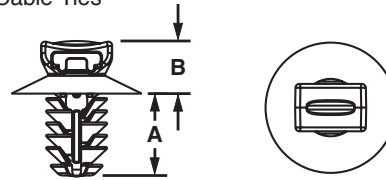
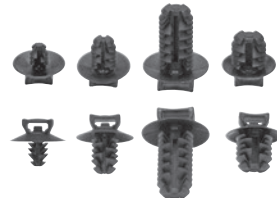


Part Number	Max. Bundle Diameter A		Width B		Bundle Offset C		Max. Panel Thickness		Panel Hole Diameter		Color	Std. Pkg. Qty.	Std. Ctn. Qty.
	In.	mm	In.	mm	In.	mm	In.	mm	In.	mm			
PC038-H25D-C0	0.38	9.5	0.62	15.7	0.64	16.3	0.13	3.2	0.28	7.1	Black	100	500
PC050-H25D-C0	0.50	12.7	0.62	15.7	0.71	17.9	0.13	3.2	0.28	7.1		100	500
PC062-H25D-C0	0.63	15.8	0.62	15.7	0.77	19.5	0.13	3.2	0.28	7.1		100	500
PC075-H25D-C0	0.75	19.1	0.62	15.7	0.83	21.1	0.13	3.2	0.28	7.1		100	1000
PC087-H25D-C0	0.88	22.1	0.62	15.7	0.89	22.7	0.13	3.2	0.28	7.1		100	1000
PC100-H25D-C0	1.00	25.4	0.62	15.7	0.96	24.3	0.13	3.2	0.28	7.1		100	1000
PC112-H25D-C0	1.13	28.5	0.62	15.7	1.02	25.8	0.13	3.2	0.28	7.1		100	1000
PC125-H25D-C0	1.25	31.8	0.62	15.7	1.08	27.4	0.13	3.2	0.28	7.1		100	1000

## Fir Tree Push Mounts

- Unique alternating barb design
- Lock securely into position
- Umbrella tensioning

- Exclusive contoured anvil head
- Material: Heat Stabilized Nylon 6.6
- NEW Heavy Duty Fir Tree Mount for use with Wide Strap Cable Ties\*



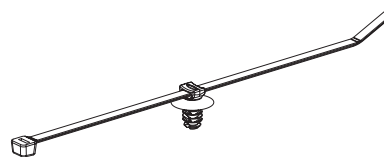
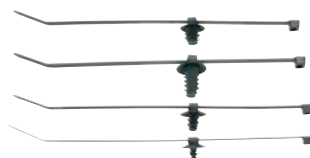
Part Number	Used with Cable Ties‡	Material	Head Diameter		Panel to Top of Mount		Overall Height		Panel Hole Diameter Range		Panel Thickness Range		Std. Pkg. Qty.	Std. Ctn. Qty.
			In.	mm	In.	mm	In.	mm	In.	mm	In.	mm		
PUM-049-M30	M, I, S	Heat stabilized weather resistant Nylon 6.6	0.67	17.0	0.26	6.6	0.54	13.8	0.18 – 0.19	4.6 – 4.9	0.03 – 0.19	0.7 – 3.0	1000	5000
PUM-071-M30	M, I, S		0.67	17.0	0.26	6.5	0.67	16.9	0.25 – 0.28	6.3 – 7.1	0.03 – 0.28	0.8 – 7.0	1000	5000
PUM-100-M30	M, I, S		0.64	16.0	0.26	6.5	0.67	16.9	0.35 – 0.40	9.0 – 10.0	0.03 – 0.28	0.8 – 7.0	1000	5000
PUM-925-M30	M, I, S, LH		0.77	20.0	0.30	7.6	1.05	26.7	0.34 – 0.36	8.8 – 9.3	0.04 – 0.62	1.0 – 16.0	1000	5000
PUME925-M350 *NEW!	M, I, S, LH, H, EH	Impact modified heat stabilized weather resistant nylon 6.6	1.00	25.4	0.317	8.0	1.15	29.2	0.34 – 0.36	8.8 – 9.3	0.04 – 0.62	1.0 – 16.0	1000	5000

‡Cable Tie Cross Section Sizes: M = Miniature, S = Standard, I = Intermediate, LH = Light-Heavy, H = Heavy, and EH = Extra Heavy.

## Fir Tree Push Mount Assemblies

- Cable tie/mount assemblies significantly reduce installation time compared to loose parts
- Fewer parts throughout the manufacturing/assembly process

- Heat Stabilized Nylon 6.6 standard on cable ties and mounts
- New Heavy Duty Fir Tree Mount assemblies with Wide Strap Cable Ties\*



Part Number	Material	Head Diameter		Panel to Top of Mount		Overall Height		Panel Hole Diameter Range		Panel Thickness Range		Max. Bundle Diameter		Std. Pkg. Qty.	Std. Ctn. Qty.
		In.	mm	In.	mm	In.	mm	In.	mm	In.	mm	In.	mm		
PUM-049-2S-D30 ^	Heat stabilized weather resistant Nylon 6.6	0.67	17.0	0.26	6.6	0.54	13.8	0.18 – 0.19	4.6 – 4.9	0.03 – 0.19	0.7 – 3.0	1.88	48.0	500	5000
PUM-071-2S-D31 ^		0.67	17.0	0.26	6.6	0.67	16.9	0.25 – 0.28	6.3 – 7.1	0.03 – 0.28	0.8 – 7.0			500	5000
PUM-100-2S-D32 ^		0.64	16.0	0.26	6.6	0.67	16.9	0.35 – 0.40	9.0 – 10.0	0.03 – 0.28	0.8 – 7.0			500	5000
PUM-925-3H-D33 ^^		0.77	20.0	0.30	7.6	1.05	26.7	0.34 – 0.36	8.8 – 9.3	0.04 – 0.62	1.0 – 16.0	3.00	76.0	200	1000
PUME925-3E-C350 * *NEW!	Impact modified heat stabilized weather resistant nylon 6.6	1.18	30.0	0.275	7.0	1.10	28.0	0.34 – 0.36	8.8 – 9.3	0.04 – 0.62	1.0 – 16.0	3.25	82.6	100	1000
PUME925-4E-C350 * *NEW!												4.13	105	100	1000

^ Includes PLT2S Cable ties. ^^ Includes PLT3H Cable ties. \* Includes Wide Strap PLWSXXX-TL350 Cable ties.

## NEW! Ergonomic Metal Cable Tie Hand Tools

### Cable Tie Tools – Tool Controlled Tension and Cut-Off

- Used in production, maintenance, or construction applications
- Tool controlled tension provides flush cut-off and speeds installation to lower installed cost
- Lightweight and balanced
- Easy to change tension adjustment and easy to operate
- A combination of design, operation, and construction features, provides a long service life
- Replacement blades available
- No special maintenance required

#### Key Features and Benefits

- Improved cable tie cut-off mechanism that minimizes the impact to the installer's hand by more than 40% – the lowest in the industry
- Low handle force required to cut-off the cable tie – 15% lower handle force than comparable tools



### Pneumatic Hand Tools – Tool Controlled Tension and Cut-Off

- Pneumatic, push button operation tensions and cuts off excess tie in a fraction of a second
- Durable, lightweight, ergonomic design is easy to operate and designed to reduce operator fatigue
- Easy to change tension adjustment
- Operates on non-lubricated air, without special maintenance



Part Number	Used with Cable Ties	Weight		Part Features	Standards	Std. Pkg. Qty.
		Oz.	g			
GTS-E	SM, M, I, S	13.6	385.6	Trigger Handle: Black, Selector Knob: Black, Cushioned Handle: Black, Material: Aluminum	QPL per Mil. Std. SAE AS81306 and Mil. Spec. SAE AS90387 Mil. Spec. Part Number MS90387-1	1
GS2B-E	M, I, S	11.5	327	Metal tool with a durable powder coat finish.		1
GTH-E	S, HS, LH, H	11.9	337	Ergonomic design with impact resistant resin housing, narrow nose, and cushion handle.	QPL per Mil. Std. SAE AS81306 and Mil. Spec. SAE AS90387 Mil. Spec. Part Number MS90387-2	1
GS4H-E	S, HS, LH, H	15.4	436.6	Trigger Handle: Red, Selector Knob: Red, Cushioned Handle: Red, Material: Aluminum		1
GS4EH-E	LH, H, EH	15.4	436.6	Trigger Handle: Blue, Selector Knob: Blue, Cushioned Handle: Blue, Material: Aluminum		1
PTS	SM, M, I, S	17.3	490	Ergonomic design with impact resistant resin housing and black knob; replacement parts can be part of a scheduled maintenance program		1
PTH	S, HS, LH, H	32.0	907	Ergonomic design with impact resistant resin housing and red knob; replacement parts can be part of a scheduled maintenance program		1

Cable tie cross section sizes: SM = Subminiature, M = Miniature, I = Intermediate, S = Standard, HS = Heavy-Standard, LH = Light-Heavy, H = Heavy, EH = Extra-Heavy. Note: All pneumatic hand tools require the PPH10 hose and PL289N1 filter/regulator for proper operation.

## Complete Your Bundle



### Cable Ties

Panduit cable ties are designed to exceed industry standards for use in high-vibration areas. Available in a wide range of materials, styles and sizes to meet your internal and external temperature applications.

- External tooth design on select styles for improved abrasion-resistance to wires, cables and hoses
- Metal barb styles for added tensile strength and increased bundle diameter variations
- Push mount and fir tree barb style ties for specialty applications
- Unique designs, such as wide strap and dual-clamp ties, improve reliability and productivity



### Cable Accessories

Mounts and other devices help secure wire, cable and hose bundles – making installation more efficient and cost effective.

- Installation styles, such as push barb, stud mount and bolt/screw, help tailor cable routing and management
- Adhesive options for mounting to surfaces in interior and exterior applications
- Most styles are available in a variety of materials for high temperature, UV resistant and general purpose applications



### Stainless Steel Cable Ties

Stainless-steel cable ties can bundle, fasten and secure cables and hoses that are exposed to corrosive or harsh conditions. Ties are built to last, helping reduce periodic rework.

- Self-locking cable ties enable faster installation
- Fully coated ties help prevent corrosion between dissimilar metals
- Smooth surfaces and rounded edges protect the cable bundle and the installer for improved safety, productivity and reliability



## Cable Identification

Complete labeling systems – including time-saving labeling software, easy to use printers, high-end metal marker plates and heat shrink labels – help minimize installation time and ensure high-quality wire and cabling identification in demanding environments.

- Software simplifies label creation
- Outdoor rated and water-resistant label options
- Handheld and desktop printers allow for fast and high-quality label production
- Custom, imprinted cable ties available in multiple styles, sizes and colors



## Abrasion Protection

A broad range of abrasion protection products for wire, cable and tubing meet your unique application requirements and today's most demanding safety standards.

- Braided, expandable sleeving fully covers wires while allowing heat dissipation
- Spiral wrap creates bundles to provide protection



## Power Connectors and Grounding

Copper and aluminum compression connectors and mechanical connectors provide critical electrical grounding and reliable wire terminations.

- Compression and mechanical lugs and splices designed for demanding power applications



**PANDUIT®**

Panduit Corp.  
World Headquarters  
Tinley Park, IL 60487

800.777.3300

[www.panduit.com](http://www.panduit.com)